



GAT MONTHLY MEMBERSHIP PROGRESS REPORT

Results as of: 1/31/2021

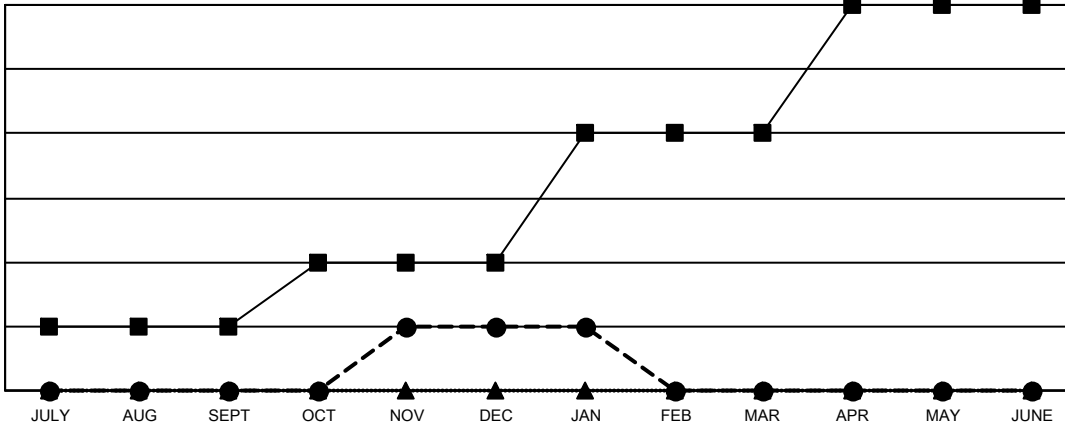
Multiple District 31

LOCATION: NORTH CAROLINA

| Clubs | | | |
|-----------------------|---------------|-----------|---------------|
| RESULTS FOR 2020-2021 | | | |
| QUARTER | NEW CLUB GOAL | NEW CLUBS | DROPPED CLUBS |
| JULY/AUG/SEPT | 1 | 0 | 3 |
| OCT/NOV/DEC | 1 | 1 | 0 |
| JAN/FEB/MAR | 2 | 0 | 1 |
| APR/MAY/JUNE | 2 | 0 | 0 |

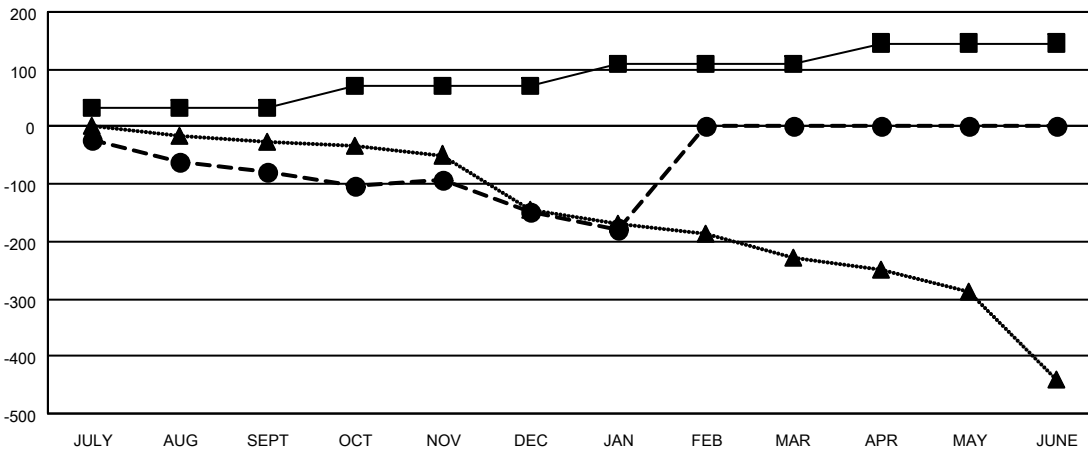
| Members | | | |
|-----------------------|------------------------|----------------------|--|
| RESULTS FOR 2020-2021 | | | |
| QUARTER | MEMBER GROWTH NET GOAL | MEMBER GROWTH ACTUAL | DROPPED MEMBERS ACTUAL (including transfers) |
| JULY/AUG/SEPT | 32 | 88 | 149 |
| OCT/NOV/DEC | 40 | 99 | 161 |
| JAN/FEB/MAR | 38 | 21 | 48 |
| APR/MAY/JUNE | 36 | 0 | 0 |

GOALS AND ACTUAL NEW CLUBS CUMULATIVE



- - CURRENT YEAR GOALS FOR NEW CLUBS
- - CURRENT YEAR ACTUAL NEW CLUBS
- ▲ - LAST YEAR ACTUAL NEW CLUBS

GOALS AND ACTUAL MEMBERS CUMULATIVE



- - MEMBER GROWTH NET GOAL
- - MEMBER GROWTH ACTUAL
- ▲ - LAST YEAR MEMBERSHIP ACTUAL

| | |
|------------------------|------------|
| DROPPED CLUBS: 4 | |
| <u>DROPPED MEMBERS</u> | |
| DECEASED | 77 |
| CLUB CANCELLED | 0 |
| OTHER | 281 |
| TOTAL | 358 |

72 CLUBS OF 273 ADDED 1 OR MORE NEW MEMBERS

[CLICK HERE FOR CUMULATIVE MEMBERSHIP DATA](#)

| <u>GENDER DISTRIBUTION</u> | |
|----------------------------|----------------|
| MALE | 3,476 (68.30%) |
| FEMALE | 1,613 (31.70%) |

| | |
|---------------------------------|-------|
| TOTAL FAMILY UNIT MEMBERS | 1,138 |
| FAMILY MEMBERS PAYING HALF DUES | 585 |